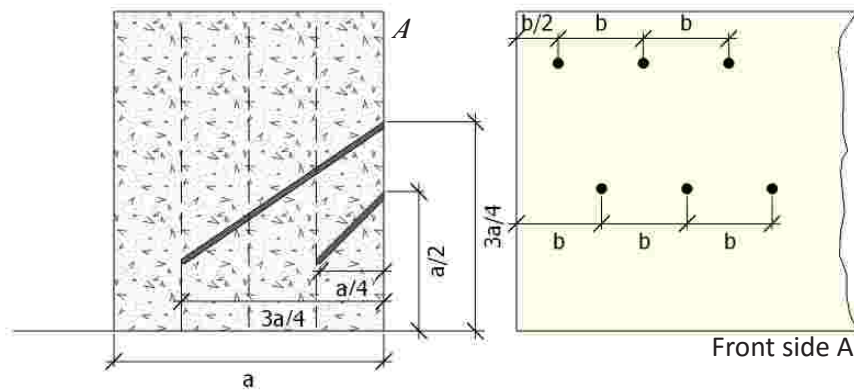


PLACEMENT SCHEMES FOR SEVERAL WALL THICKNESS, FOR ONE OR BOTH SIDES

WALLS WITH MORE THAN 30 CM OF THICKNESS, ACCESS THROUGH ONE SIDE

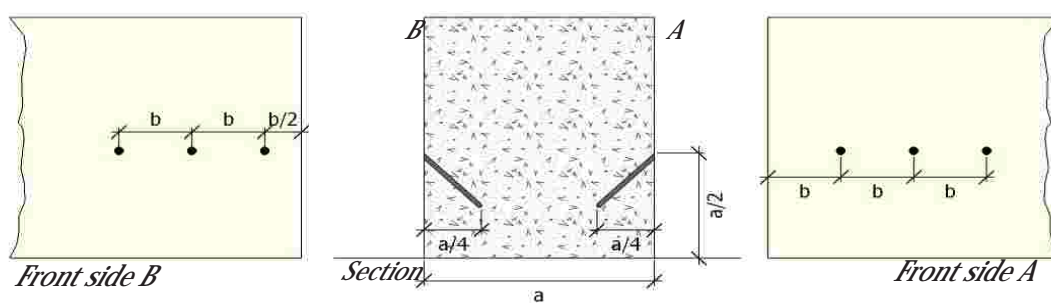
When the placement is not possible by both sides the placement must be done for just one with two perforation lines and holes drilled at triangular pitch as is shown in the schemes. The drills must be done inclined as the scheme shows.



Wall thickness (a)	Number of nozzles by LM	Hole placement (a/2)	Hole placement	a/4	b/2
40	8	20	30	10	12.5
50	10	25	32.5	12.5	10
60	12	30	45	15	7.5
70	14	35	52.5	17.5	7.5
80	16	40	60	20	6

WALLS WITH MORE THAN 30 CM OF THICKNESS, ACCESS BY BOTH SIDES.

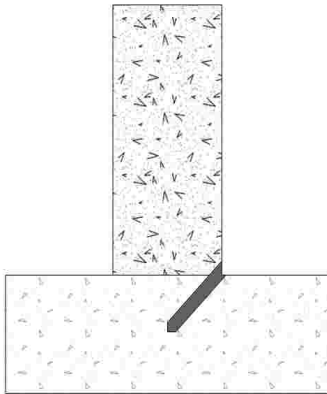
When the thickness of the wall is more than 30 cm is recommendable to apply the product for both sides. The drills must be done with an inclination of 45° and alternately placed as showed in the scheme.



Wall thickness (a)	Number of nozzles by LM	Hole placement (a/2)	Hole placement	a/4	b/2
40	8	20	25	10	12.5
50	10	25	20	12.5	10
60	12	30	15	15	7.5
70	14	35	15	17.5	7.5
80	16	40	12	20	6

PROCEDURE FOR WALLS WITH AN HIGH MOISTURE:

-When the wall has a lot of moisture is necessary to obtain drillholes of 25 mm of diameter with an inclination of 45° each 50cm in the joint between the wall and pavement. These drillholes allow the ventilation and the drying of the Wall. Once the injection is done the holes can be plugged with mortar. It is recommended that the holes must be plugged permanently if the moisture persists.



WHEN THE PRODUCT CAN NOT GET OUT FROM NOZZLE:

-In the case of that the product becomes dry in the tube, the tube must be changed for another one new.

-When the product can not get out because the drillhole is plugged it must be cleaned by drilling it again increasing the depth 2-3 cm in order to remove the dried product wastes.



AFTER REMOVE THE COVERING:

Before placing the nozzles is recommendable to repair the remaining holes that can be below of nozzles level. It is recommended to do this in order to avoid losses of the product through the holes.



ODOURS AND VENTILATION:

Works with nozzles must be done with properly ventilation. The places must be free while the treatment is being done and when the work is just finished as well. 48 hours of ventilation is recommended before using the space. The time of ventilation can be different according with the weather temperature and the level of ventilation of the space.



*Minimum
48 Hrs*

*Call or send and e-mail to our technical department
for further information or solve any doubt:*

Tlf. 0034 981 60 21 11 o comex@tea.is.es

RECOMMENDED FINISHES FOR CAPI-C SYSTEM

WALL COVERING

-To repair the old mortar in the areas affected by the moisture, we recommend the application of **CAPILAI-S-N**, a mortar in base of bondings of cement and lime, with excellent transpirability properties, specially designed for the cleaning of facades or walls affected by rising-damp after the **TEAIS CAPI-C** treatment.



Application of Capilais N

EMPLASTECIDO DE MUROS:

-To putty the covering is recommended to use products which allow the transpiration of layers. **PLASTOCAL**, mortar for putting based on lime. **PERLAIS E**, White or insulating putty.



Application of Plastocal o Perlais E

FOR PAINTING WALLS:

To Paint the support is recommended the use of paints which allow the transpiration of the support.



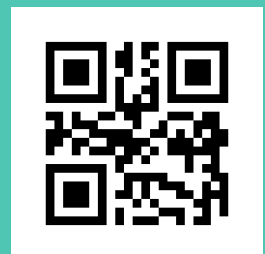
Pindus, is an elastic paint for indoors with low resin content what make easier the transpiration of the support.

Pinsil D is suitable for this application because not forms a barrier and let transpire the support, it has a excellent durability, is quite resistant against light and UV radiation. In addition, it has a biocide effect causes by its high PH level, avoids the dirty, it not cracks and no air bags are formed neither swelled by moisture.

Pincals is a mineral paint whose high PH provides a disinfectant and antiparasitic effects. It is suitable for restoration and conservation works of monuments and heritage buildiuss both indoors and outdoors. It allows the transpiration and does not create a barrier.



Application of finishing transpirable paints.



www.teais.es

TEAIS S.A.
Avda da Enerxía Nº 153 , Polígono industrial de Sabón
15.143 Arteixo, A Coruña
Telef.: +34 981 60 21 11 Fax: +34 981 60 15 08 E-mail: comex@teais.es

PROFFESIONAL SOLUTIONS FOR CONSTRUCTION AND INDUSTRY